

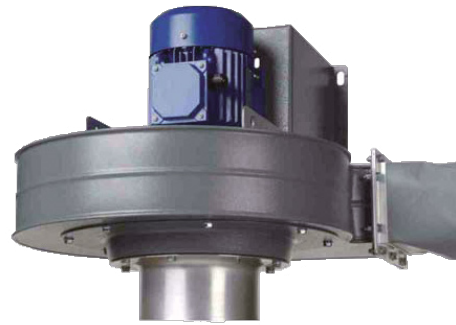
FAN-42

EXTRACTION FAN

The FAN-42 is a wall-mounted extraction fan that provides extraction for T-Flex/CW, Flex and UltraFlex extraction arms:

- being part of a central filter system; or
- connected to a 2 or 4 m extension crane (with or without filtration).

The FAN-42 can be mounted directly to the wall.



APPLICATIONS

The FAN-42 is intended to be used for the following applications:

- MIG-MAG/GMAW welding
- TIG welding
- FCAW welding
- stick/MMAW welding



Do **not** use the FAN-42 for the following applications or in the following circumstances:

- arc-air gouging
- aluminium laser cutting
- extraction of aggressive fumes and gases (e.g. from acids, from alkaline, from soldering paste containing lithium)
- extraction of hot gases (more than 45°C/113°F continuously)
- grinding aluminum and magnesium
- flame spraying
- extraction of cement, saw dust, wood dust etc.
- sucking cigarettes, cigars, oiled tissues and other burning particles, objects and acids
- explosive environments or explosive substances/gases



SPECIFICATIONS

Physical dimensions and properties

| | |
|-----------------|-----------------------|
| Material | steel |
| Colour: | |
| • housing | • grey |
| • motor | • blue |
| Inlet diameter | Ø 200 mm (Ø 7.87 in.) |
| Outlet diameter | Ø 160 mm (Ø 6.30 in.) |
| Weight (net) | 34 kg (75 lbs.) |

Performance

| | |
|----------------------|--------------------------------|
| Fan type | radial |
| Unrestricted airflow | 3000 m³/h (1750 CFM) |
| Speed: | |
| • 50Hz | • 2800 rpm |
| • 60Hz | • 3400 rpm |
| Noise level | 72 dB(A) according to ISO 3746 |

Electrical data

| | |
|-------------------------------|----------------------------|
| Power consumption | 1,5 kW (2 HP) |
| Available connection voltages | refer to order information |

| | |
|---|---|
| Max. start/stops per hour | 30 |
| Insulation class | F |
| Protection class | IP 55 |
| Ambient conditions | |
| Operating temperature: | |
| • min. | • 5°C (41°F) |
| • nom. | • 20°C (68°F) |
| • max. | • 45°C (113°F) |
| Max. relative humidity | 80% |
| Outdoor use allowed | no |
| Storage conditions | • 5-45°C (41-113°F) • relative humidity max. 80% |
| Product combinations | |
| T-Flex/CW | telescopic extraction arm |
| Flex-3/4 (+ NEC-2/4) | flexible extraction arm (+ extension crane) |
| UltraFlex-3/4 (+ NEC-2/4) | ultraflexible extraction arm (+ extension crane) |
| Available options | |
| Motor protection switch (MPS) for FAN-42: | |
| • 230V/3~/50Hz | • MPS 4.0-6.3A |
| • 400V/3~/50Hz | • MPS 2.5-4.0A |
| • 208-230V/460V/3~/60Hz | • MPS 2.5-4.0A |
| Thermal relay (NTR) for FAN-42: | |
| | CB / CB-WCS + |
| • 230V/3~/50Hz | • NTR 4.2-5.7A |
| • 400V/3~/50Hz | • NTR 2.3-3.1A |
| • 208-230V/460V/3~/60Hz | • NTR 2.3-3.1A |
| Scope of supply | |
| Extraction fan incl. inlet and outlet flange - Flexible hose 1,5 m Ø 200 mm - Connection flange Ø 160-200 mm - Bush (2) - Hose clamp (2) - Hardware | |
| Order information | |
| FAN-42/RD: | Article no.: |
| • 230V/3~/50Hz (235) | • 7906010050 |
| • 400V/3~/50Hz (435) | • 7906010010 |
| • 208-230V/460V/3~/60Hz (default: 460V) | • 7905220820 |

| | |
|--|--|
| FAN-42/LG: | Article no.: |
| <ul style="list-style-type: none"> • 230V/3~/50Hz • 400V/3~/50Hz | <ul style="list-style-type: none"> • 7906020050 • 7906020010 |
| Number/package | 1 |
| Shipping data | |
| Gross weight | 37 kg (82 lbs.) |
| Packing dimensions | 800 x 1200 x 650 mm (31.5 x 47.2 x 25.6 in.) |
| Max. number/pallet | 2 |
| Harmonized Tariff Code | 8414.5940.90 |
| Country of origin | the Netherlands |

APPROVALS/CERTIFICATES



Directive 2011/65/EC (RoHS)
valid as of 8 June 2011

SENSE OF ROTATION

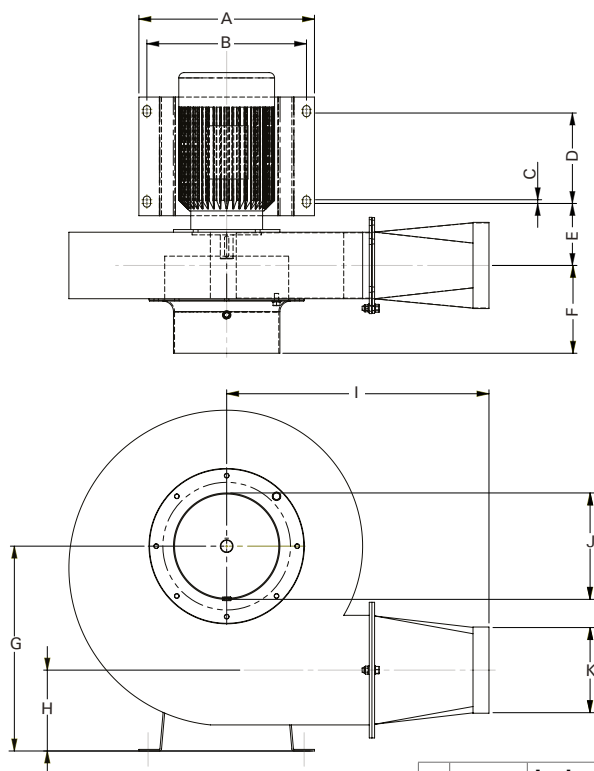


RD
clockwise; outlet right

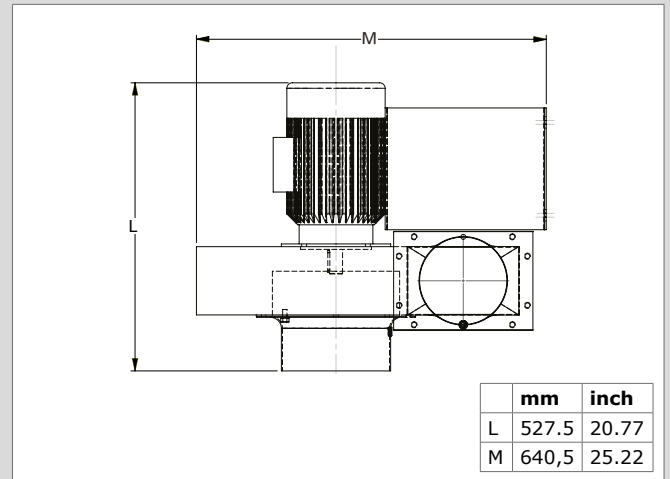


LG
counterclockwise; outlet left

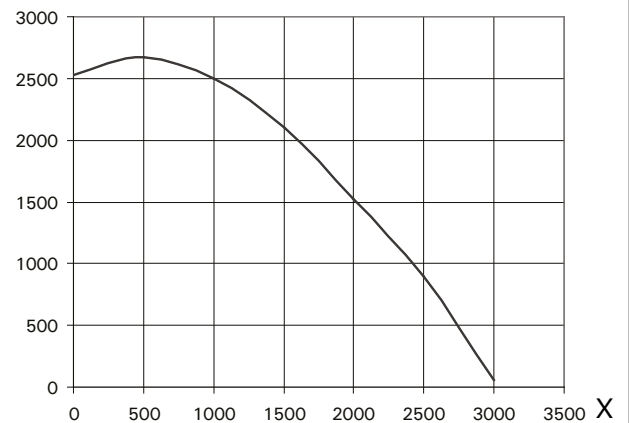
DIMENSIONS



| | mm | inch |
|---|-------|--------|
| A | 330 | 12.99 |
| B | 300 | 11.81 |
| C | 7 | 0.28 |
| D | 170 | 6.69 |
| E | 116,5 | 4.59 |
| F | 165 | 6.50 |
| G | 385 | 15.16 |
| H | 152 | 5.98 |
| I | 493 | 19.41 |
| J | Ø 200 | Ø 7.87 |
| k | Ø 160 | Ø 6.30 |



FAN CURVE



X = Airflow (m³/h)

Y = Static pressure (Pa)

Product type

FAN-42

Article no.

refer to order information

Product category

extraction fans

Version

120421/G

Always check the latest version on www.plymovent.com