

MONOGO

STATIONARY FILTER UNIT WITH HOSE TUBE

ARM

The MonoGo is a stationary welding fume filter with built-in fan and a hose tube arm (EconomyArm). It contains a disposable filter package.

The MonoGo is an entry level extractor. It has been designed for the consumption of approx. 1 coil of solid wire or 7,5 kg/16.5 lbs of electrodes per month and TIG welding.



APPLICATIONS

The MonoGo is intended to be used for the following applications:

- MIG-MAG/GMAW welding
- TIG welding
- FCAW welding
- stick/MMAW welding
- grinding
- polishing
- finishing



SPECIFICATIONS

Physical dimensions and properties

Material (housing):	electro-zinc coated steel (according to DIN EN 10152)
• steel grade	• DC01+ZE
• steel grade no.	• 1.0330
Colour	yellow RAL 1004 grey RAL 7011
Weight (net), excl. arm	78 kg (172 lbs)
Mains cord	not included

Extraction arm

Type	EconomyArm (EA)
Material	hose tube
Diameter	Ø 160 mm (6.3 in.)
Hood opening	Ø 300 mm (11.8 in.)
Length:	
• EA-2	• 2 m (6.6 ft)
• EA-3	• 3 m (9.8 ft)
• EA-4	• 4 m (13.1 ft)
Weight:	
• EA-2	• 11 kg (24.3 lbs)
• EA-3	• 13 kg (28.7 lbs)
• EA-4	• 15 kg (33.1 lbs)

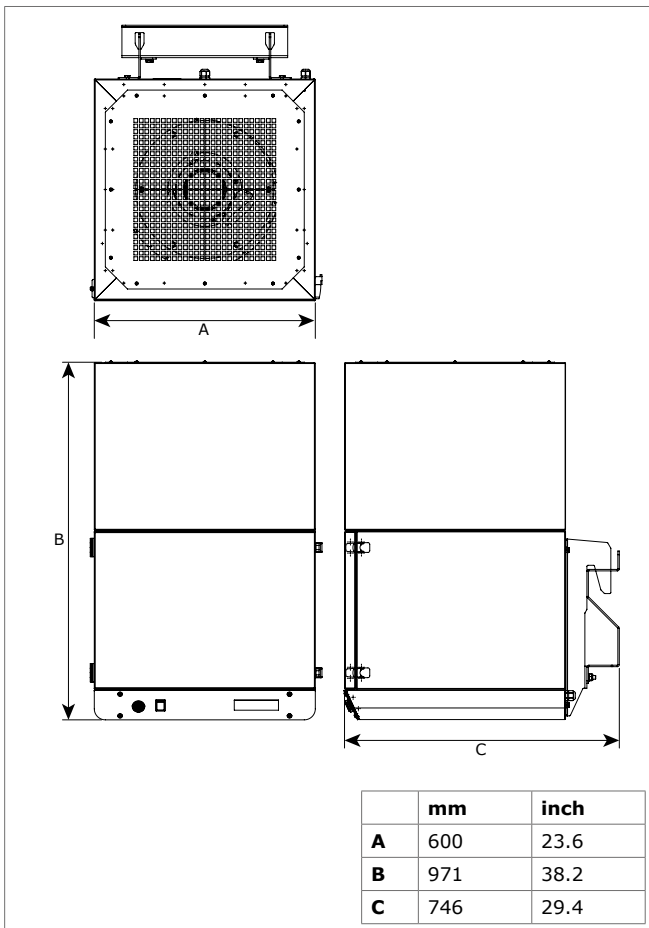
Filters

Pre filter cassette:	
• material	• polyester
• filter surface	• 1 m ² (10.8 ft ²)
• efficiency	• G4 according to EN 779
• washable	• no
HEPA filter cassette:	
• material	• glass fibre
• filter surface	• 15 m ² (161 ft ²)
• efficiency	• HEPA E12 according to EN 1822:2009

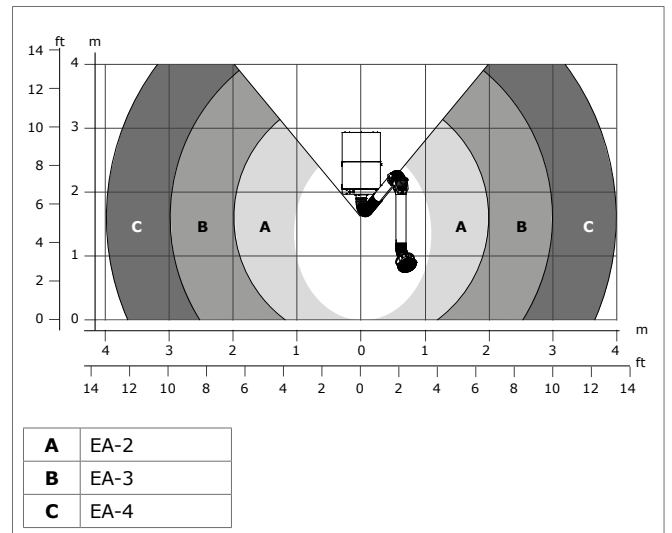
• washable	• no
Welding fume class	
W3	according to ISO 15012-1:2013
Performance	
Fan type	radial
Extraction capacity (incl. extraction arm)	max. 850 m ³ /h (500 CFM)
Fan speed	2800 rpm
Noise level (according to ISO 3746)	67 dB(A)
Electrical data	
Power consumption	1,1 kW (1.5 HP)
Available connection voltages	• 115V/1ph/50Hz (115) • 115V/1ph/60Hz (116) • 230V/1ph/50Hz (215)
Motor design	IEC
Energy efficiency	<i>n.a. for single phase motors</i>
Ambient and process conditions	
Process temperature:	
• min.	• 5°C (41°F)
• nom.	• 20°C (68°F)
• max.	• 70°C (158°F)
Max. relative humidity	90%
Suitable for outdoor use	no
Storage conditions	• 5-45°C (41-113°F) • relative humidity max. 80%
Scope of supply	
Stationary filter unit, incl. fan and wall bracket – Extraction arm (pre-assembled; excl. hose tube) – Hose tube – Hose clamp (2) – Rotating flange – Arm swivel ring, incl. rubber collar – Extraction hood – Hood collar with safety mesh – Mounting material – Switch box	

Type	MonoGo/2m	MonoGo/3m	MonoGo/4m
■ Order information			
Connection voltage	Article no.	Article no.	Article no.
115V/1ph/50Hz	0000111456	0000111477	0000111489
115V/1ph/60Hz	0000111457	0000111478	0000111490
230V/1ph/50Hz	0000111455	0000111476	0000111488
Number/package	1	1	1
■ Logistics data			
Gross weight (incl. pallet)	103 kg (227 lbs)	106,5 kg (235 lbs)	107,5 kg (237 lbs)
Packing dimensions (incl. pallet)	800 x 1200 x 1750 mm (31.5x47.2x68.9 in.)	800 x 1200 x 2250 mm (31.5x47.2x88.6 in.)	800 x 1200 x 2250 mm (31.5x47.2x88.6 in.)
Max. number/pallet	2	2	2
Harmonized Tariff Code	84213925	84213925	84213925

DIMENSIONS



WORKING RANGE



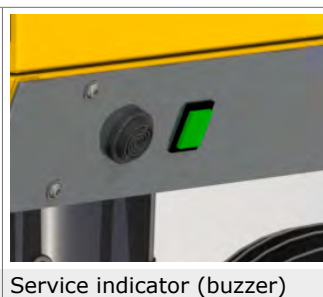
FEATURES & BENEFITS



Compact design





Remote control



Service indicator (buzzer)

APPROVALS/CERTIFICATES

	
	Directive 2011/65/EC (RoHS) valid as of 8 June 2011

Application restrictions

Do **not** use the product for the following applications or in the following circumstances: polishing applications in combination with grinding, welding or any other application that generate sparks (fibres from polishing or abrasive flap disks are highly flammable and pose a high risk of filter fires when exposed to sparks) | aluminium laser cutting | oil mist | heavy oil mist in welding fume | arc-air gouging | extraction of aggressive fumes and gases (e.g. from acids, from alkaline, from soldering paste containing lithium) | extraction of hot gases (more than 70°C/158°F continuously) | grinding aluminum and magnesium | flame spraying | extraction of cement, saw dust, wood dust etc. | sucking cigarettes, cigars, oiled tissues and other burning particles, objects and acids | explosive environments or explosive substances/gases

Product type Article no. Product category Version	MonoGo <i>refer to Order information</i> stationary filter units 280917/G
Always check the latest version on www.plymovent.com	