

SCS-DILUTER PRO | GO

ENVIRONMENTAL DILUTER SYSTEM

The SCS-Diluter is a free-standing filtration system that prevents accumulation of welding fume by continuous filtration of polluted air. The SCS-Diluter consists of a filter unit, a fan in a sound-absorbing case, an outlet unit with adjustable outlet nozzles and a silencer.

The SCS-Diluter is supplied with intelligent control equipment ControlPro or ControlGo. The fan speed is pressure controlled by a frequency inverter.

The filter unit is provided with a spark arrester and filter cartridges. It contains the *RoboCleanPlus* system for automatic filter cleaning. The dust and dirt particles end up in the dustbin underneath.



APPLICATIONS

The SCS-Diluter is intended to be used for the following applications:

- MIG-MAG/GMAW welding
- TIG welding
- FCAW welding
- stick/MMAW welding
- light to medium dust load






SPECIFICATIONS

■ Physical dimensions and properties	
Inlet diameter: • fan (internal diameter)	• Ø 401 mm (15.79 in.)
Outlet diameter: • filter unit • fan (internal diameter)	• Ø 400 mm (15.75 in.) • Ø 501 mm (19.72 in.)
Material: • filter housing • base • frame • fan • fan housing • outlet unit with nozzles • silencer	• steel • LMDPE (linear medium density polyethylene) • steel • steel • steel with aluminium profiles • zinc-plated steel and aluminium • zinc-plated steel
Colour: • filter housing • filter base • frame	• grey RAL 7035 • grey RAL 7024 • black RAL 9005
Weight (net)	800 kg (1764 lbs)
Capacity of dustbin	100 litres (26 gallon)
■ Filter cartridges	
Type	FCC-150 or FCC-150/HE
Material	cellulose fibres
Filter surface area	2 x 75 m ² (2 x 807 ft ²)
Dust class	M according to DIN EN 60335-2-69
■ Compressed air system	
Required compressed air quality	dry and oil-free according to ISO 8573-3 class 6
Required pressure	6 bar (90 psi)
Compressed air connection	quick connection coupling Ø 9 mm (CEJN 320)

Compressed air consumption	max. 150 nl/min. (5.3 ft ³ /min.) (depending on the degree of saturation of the filter)
■ Performance	
Fan type	radial
Unrestricted airflow (max.)	12.000 m ³ /h (7,063 CFM)
<i>Operational airflow: refer to Order information</i>	
Throw	max. 50 m (164 ft)
Speed of revolutions	2920 rpm at 50 Hz
Noise level	<70 dB(A)
■ Electrical data	
Power consumption fan	7,5 kW (10 HP)
Connection voltage	400-690V/3~/50Hz
Insulation class fan	F with PTC
Nominal current	13,9 A
Protection class	IP 54
■ Ambient conditions	
Operating temperature:	
• min.	5°C (41 °F)
• nom.	20°C (68 °F)
• max.	45°C (113 °F)
Max. relative humidity	75%
Suitable for outdoor use	no
Storage conditions	• 5-45°C (41-113°F) • relative humidity max. 80%
■ Scope of supply	
Central filter unit SCS-D – Air inlet module – Spark arrester – Frame – Dustbin – Dustbin flange – Bush – Fan – Frame fan – Silencer – Duct 1,5 m (5 ft) / Ø 500 mm (19.7 in.) – Outlet unit with 6 nozzles – Control equipment, incl. frequency inverter – Separate pressure transmitter (SCS-Diluter GO only)	

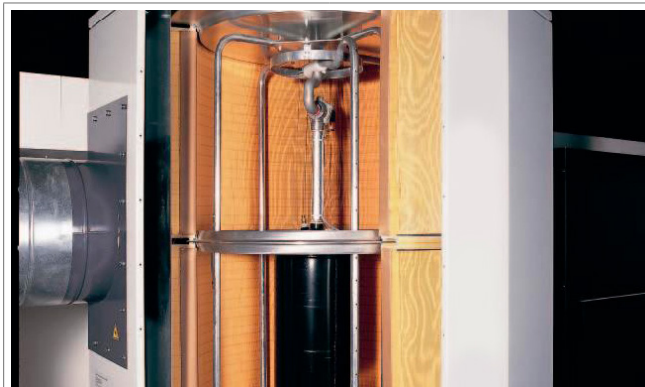
■ Order information					
Article no.	Type	Control equipment	Filter cartridges	Operational airflow (max.)	W3 compliant
0000113131	SCS-Diluter GO	ControlGo	FCC-150	9000 m ³ /h (5,297 CFM)	no
0000113132	SCS-Diluter PRO	ControlPro	FCC-150	9000 m ³ /h (5,297 CFM)	no
0000119118	SCS-Diluter PRO W3	ControlPro	FCC-150/HE	8000 m ³ /h (4,709 CFM)	yes
■ Logistics data					
	Gross weight (incl. pallet):		Packing dimensions:		
Pallet 1	149 kg	(329 lbs.)	120 x 120 x 180 cm	(47 x 47 x 71 in.)	
Pallet 2	270 kg	(595 lbs.)	120 x 120 x 210 cm	(47 x 47 x 83 in.)	
Pallet 3	213 kg	(470 lbs.)	120 x 120 x 140 cm	(47 x 47 x 55 in.)	
Pallet 4	325 kg	(717 lbs.)	80 x 120 x 180 cm	(32 x 47 x 71 in.)	
Harmonized Tariff Code		8537.1091.90			
Country of origin		Netherlands			

APPROVALS/CERTIFICATES

	
	On fan motor and frequency inverter
	Directive 2011/65/EC (RoHS) valid as of 8 June 2011



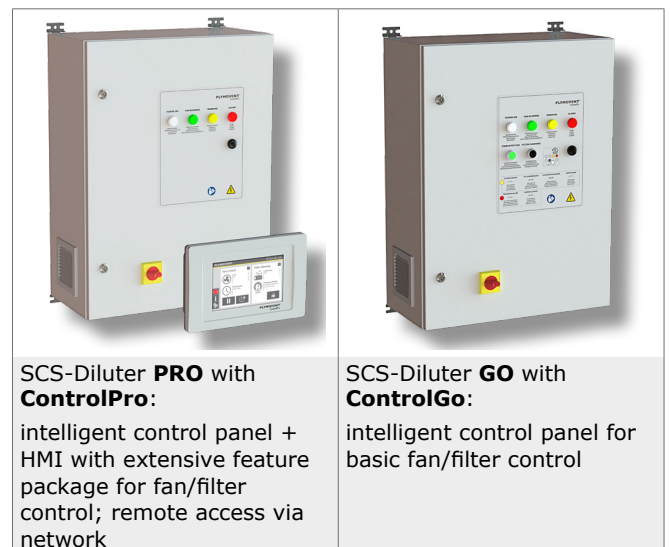
FEATURES & BENEFITS



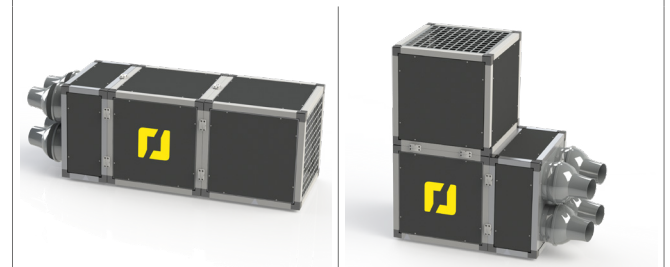
RoboCleanPlus filter cleaning system that arranges automatic sectionwise cleaning of the filter cartridges by compressed air



360° air inlet



OPTION:



BoosterFan/S

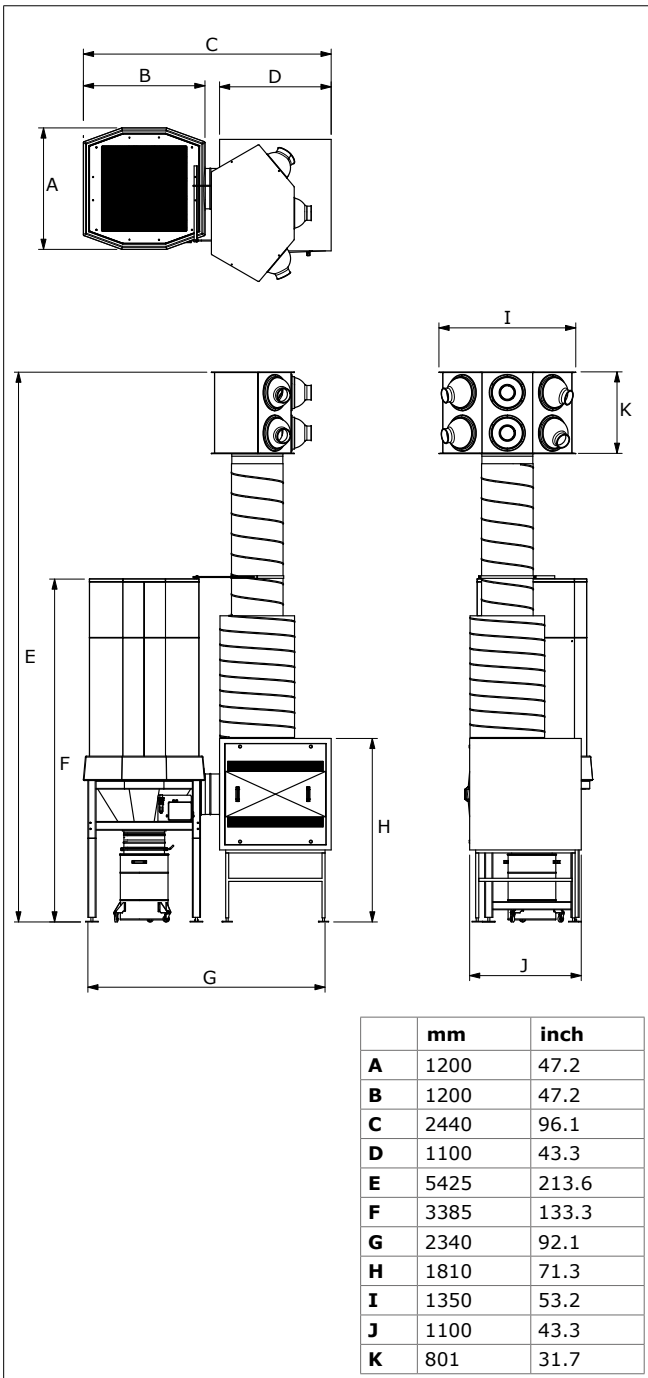
Fan with straight airflow to enlarge the throw between two Diluter systems

BoosterFan/A

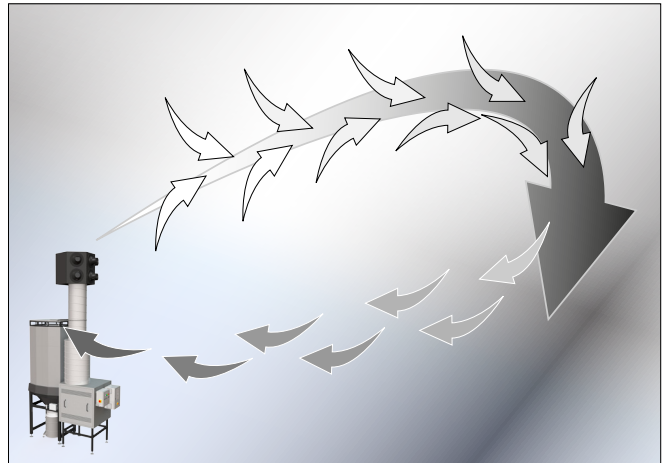
Fan with angled airflow to enhance the return flow to the Diluter system

Refer to the application data sheet for more info

DIMENSIONS



WORKING PRINCIPLE



Application restrictions

Do **not** use the product for the following applications or in the following circumstances: oil mist | extraction of hot gases (more than 45°C/113°F continuously) | sucking cigarettes, cigars, oiled tissues and other burning particles, objects and acids | explosive environments of explosive substances/gases



Product type
Article no.
Product category
Version

SCS-Diluter PRO | GO
refer to order information
general filtration systems
220622/M

Always check the latest version on www.plymovent.com