

SER

– Spring Operated Exhaust Reel

TECHNICAL DATA

Unit specification

Model range

Comes in the models
SER-450 (75mm/3", 100mm/4" hose)
SER-650 (100mm/4", 125mm/5" hose)
SER-850 (125mm/5", 150mm/6" hose)
SER-1050-200 with 200mm/8" hose connection

Hose mounting kits SER-450, -650 and 850

Includes hose stop, connection reducer and clamps.
MAS-75 for 75mm/3", hose
MAS-100 for 100mm/4", hose
MAS-125 for 125mm/5", hose
MAS-150 for 150mm/6", hose

Max hose length

10m on the hose reel.

Lifting capacity

Maximum load is 19 kg/42 lbs.-450,650,850
Maximum load is 34kg/75 lbs.-1050-200

Installation

On ceiling or wall.

Maintenance

Normal use, no maintenance required.
See owner's manual.

Temperature Range

Depending on hose, from +150°C/300°F to +350°C/660°F.
Temperatures over 150°C/300°F, intermittent use only.

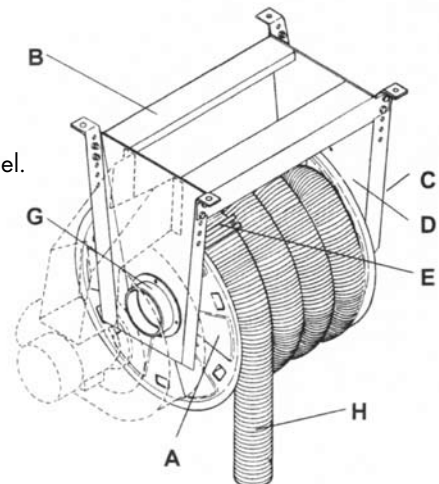
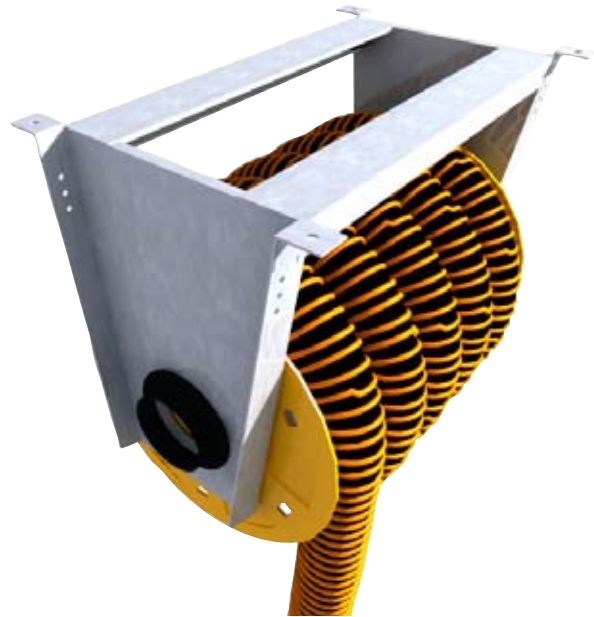
Airflow recommended

Cars 360 m³/h (210 cfm).
Trucks 1080 m³/h (635 cfm).

Design

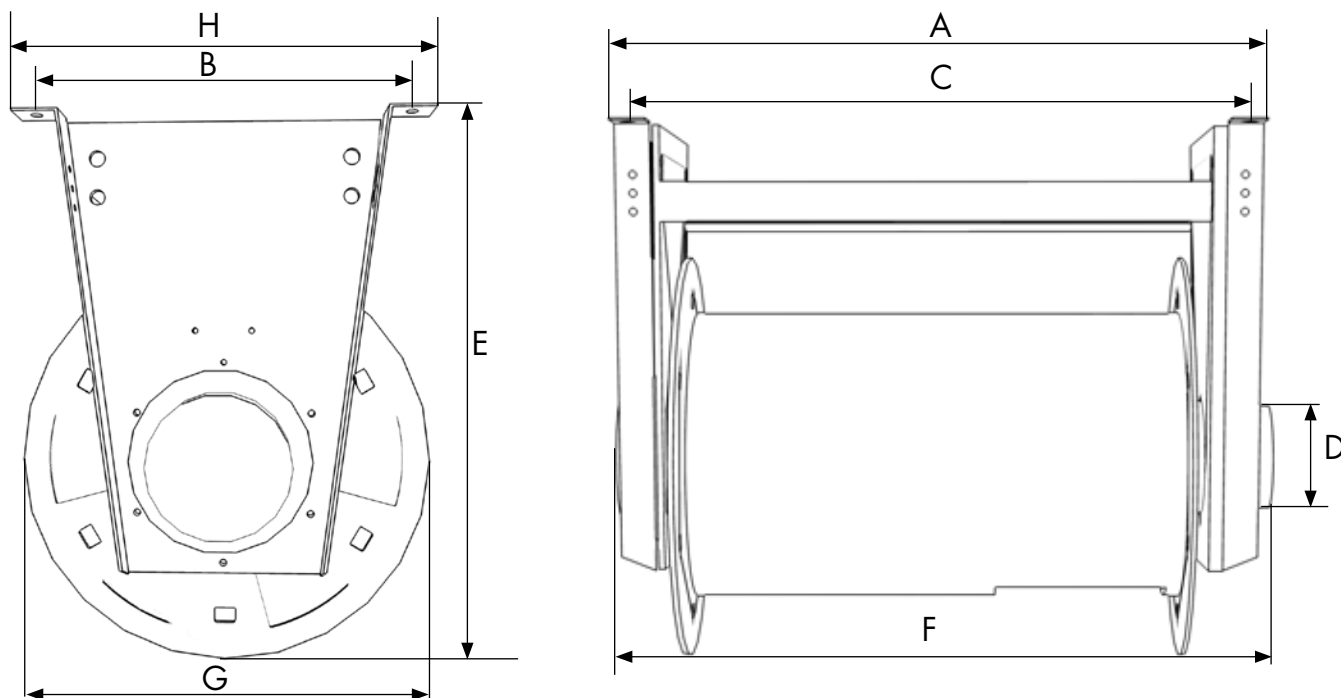
Spring hose reel without fan:

- A. Zinc coated drum with attached end plates of powder painted steel.
- B. Stand made of profiled, zinked sheet metal.
- C. Spring set with one spring of first class spring steel.
- D. Ratchet lock, locking the hose in required position.
The hose will be released at next pull.
- E. Hose stop. Positioned for adequate height at return.
- G. Adapter to fan or central exhaust system.
- H. Hose. Note! Hose must be ordered separately.



DIMENSIONS

| | SER-450 | SER-650 | SER-850 | SER-1050-200 |
|---|----------------|----------------|----------------|--------------|
| A | 630mm/24.8" | 830 mm/32.7" | 1030 mm/40.5" | 1230mm/48.4" |
| B | 500mm/19.7" | 500 mm 19.7" | 500 mm/19.7" | 525mm/20.7" |
| C | 574mm/22.6" | 774 mm/30.5" | 974 mm/38.3" | 1174mm/46.2" |
| D | Ø 160 mm/6.30" | Ø 160 mm/6.30" | Ø 160 mm/6.30" | Ø200mm/7.87" |
| E | 790 mm/31.1" | 790 mm/31.1" | 790 mm/31.1" | 1117mm/44" |
| F | 650mm/25.6" | 850 mm/33.5" | 1050 mm/41.3" | 1100mm/43.3" |
| G | 600 mm/23.6" | 600 mm/23.6" | 600 mm/23.6" | 735mm/28.9" |
| H | 552mm/21.7" | 552mm/21.7" | 552mm/21.7" | 577mm/22.7" |



PRESSURE LOSS

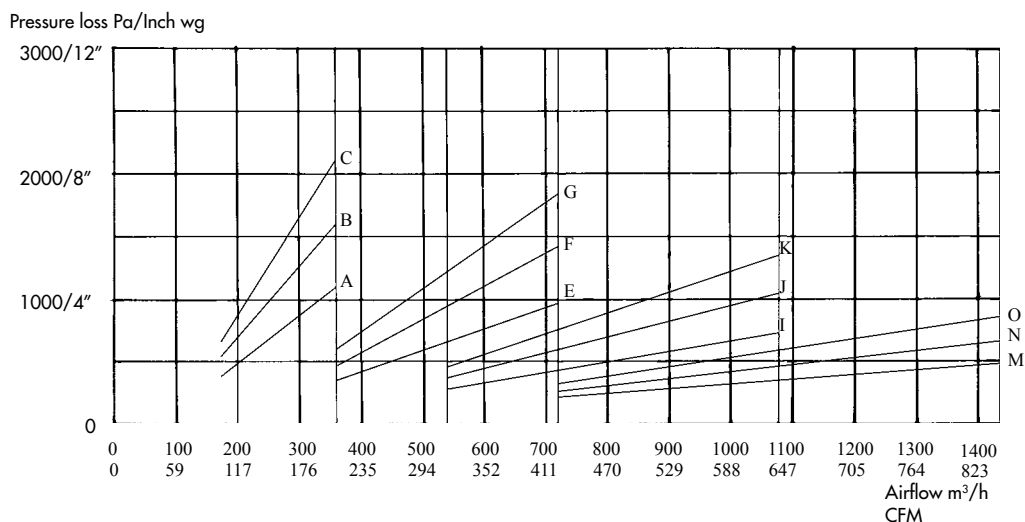
The diagram shows the pressure loss in the hose reels at different airflows in rolled out position.

Read the diagram at the recommended airflows;
 Cars 360 m³/h (211 cfm).
 Trucks 1080 m³/h (635 cfm).

The diagram shows these combinations of hose diameter/hose length:

- A.** Ø 75 mm, 5 m/ 3", 16 ft.
- B.** Ø 75 mm, 7.5 m/ 3", 25 ft.
- C.** Ø 75 mm, 10 m/ 3", 33 ft.
- E.** Ø 100 mm, 5 m/ 4", 16 ft.
- F.** Ø 100 mm, 7.5 m/ 4", 25 ft.
- G.** Ø 100 mm, 10 m/ 4", 33 ft.
- I.** Ø 125 mm, 5 m/ 5", 16 ft.
- J.** Ø 125 mm, 7.5 m/ 5", 25 ft.
- K.** Ø 125 mm, 10 m/ 5", 33 ft.
- M.** Ø 150 mm, 5 m/ 6", 16 ft.
- N.** Ø 150 mm, 7.5 m/ 6", 25 ft.
- O.** Ø 150 mm, 10 m/ 6", 33 ft.

Pressure loss SER-1050-200
 1100Pa at 2000m³/h /
 4,4" at 1175cfm.



ACCESSORIES

Hose types

EH-PV

High quality crush resistant hose designed for temperatures from 40°C/104°F to 150°C/300°F. Recommended for areas where exhaust hose will be subjected to vehicles driving over the exhaust hose.

EF

High quality fabric composite hose designed for exhaust gas temperatures from 300°C/570°F to 350°C/660°F intermittent use. Recommended for areas that service heavy trucks and off-road vehicles.

EG

High quality fabric composite hose designed for exhaust gas temperatures from 200°C/390°F to 220°C/430°F intermittent use. Recommended for areas that service cars and light trucks.

Hose recommendations

| Prod.no. | Hose diameter | Hose length | Weight without hose |
|--------------|-----------------|-------------|---------------------|
| SER-450-75 | Ø 75 mm/3 inch | 7,5 m/24 ft | 44 kg/97 lbs |
| SER-450-100 | Ø 100 mm/4 inch | 6 m/20 ft | 44 kg/97 lbs |
| SER-650-100 | Ø 100 mm/4 inch | 10 m/33 ft | 49 kg/108 lbs |
| SER-650-125 | Ø 125 mm/5 inch | 7,5 m/25 ft | 49 kg/108 lbs |
| SER-850-125 | Ø 125 mm/5 inch | 10 m/33 ft | 54 kg/119 lbs |
| SER-850-150 | Ø 150 mm/6 inch | 10 m/33 ft | 54 kg/119 lbs |
| SER-1050-200 | Ø 200mm/8 inch | 10m/33ft | 68kg/150lbs |

Nozzles

See separate data sheets.



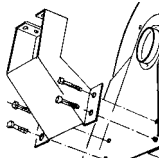
Fans

See separate data sheets.
F-serie direct mount fans
TEV- series central fans



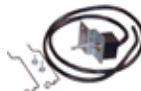
Fan mounting kit

FMA-80 for FUA-1300-2100 (SER-450-650-850)
N/A for SER-1050-200



Micro switch MSR-24/2

Used for control of damper and/or fan on exhaust reels.



Starter SA-24

Starter for fan. Power supply 3-phase 230/400 V.



Motordriven damper MD/-160/-200

Motorised damper Ø 160/200mm.
Power supply 24 VAC.



Transformer TR-24

Transformer 230/24 Volt to supply motordriven dampers when no other control equipment is used.



ECMSO

Manual motorstarters with overload. 1 - 16 A, 230 - 690 VAC



PLYMOVENT®

PlymoVent representative

Sales office
PlymoVent AB
Tangenten 2, Industrigatan 26,
SE-212 14 MALMÖ, Sweden
Tel: +46 40 30 31 30
Fax: +46 40 30 31 40
info@plymovent.se

USA
PlymoVent Corp.
115 Melrich Road
Cranbury, New Jersey 08512, USA
Tel: +1 (609) 395-3500
Fax: +1 (609) 655-0919
info@plymoventusa.com

Canada
PlymoVent Canada Inc.
24-1200 Aerowood Dr.
Mississauga, ON L4W 2S7, Canada
Tel: +1 (905) 564-4748
Fax: +1 (905) 564-4609
info@plymovent.ca
www.plymovent.com

England
PlymoVent Ltd
Marley Way, Southam Road
Banbury, OX16 2RA, England
Tel: +44 1295 25 93 11
Fax: +44 1295 27 17 50
info@plymovent.co.uk