

# MF-30

– Mechanical Filter, wallmounted,  
for two PlymoVent Ø 160 mm KUA/EA-arms

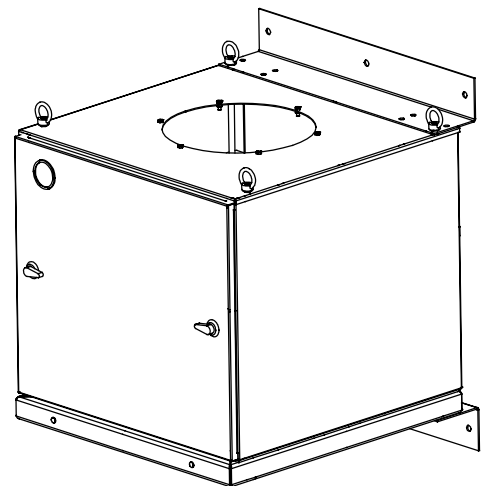
## DATOS TÉCNICOS

### Especificaciones de la unidad

|                         |  |
|-------------------------|--|
| Material de la carcasa: | Acero galvanizado                                |
| Acabado de la carcasa:  | Capa de polvo epoxi                              |
| Peso unidad:            | 49 kg  |
| Dimensiones unidad:     | Altura: 857 mm<br>Ancho: 675 mm<br>Fondo: 712 mm |
| Caudal:                 | 2 x 800 - 1200 m <sup>3</sup> /h                 |
| Max. presión negativa:  | 4000 Pa  |
| Indicador de filtro:    | Manómetro 0-2000 Pa                              |

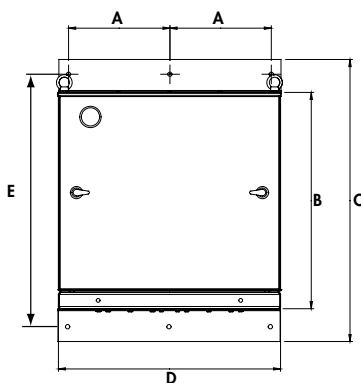
### Elementos filtrantes:

|           |  |
|-----------|--|
| Etapas 1: | Spark arrestor   |
| Etapas 2: | Pre-filter aluminium mesh  |
| Etapas 3: | Fine filter, glass fibre – GFMF<br>95% ASHRAE/F9 EuroVent/BIA-C<br>Presión final: 800 Pa |

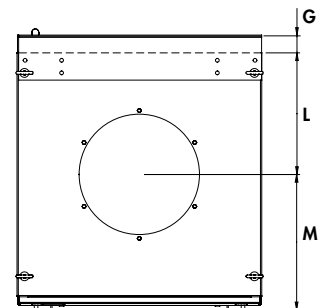


## DIMENSIONES

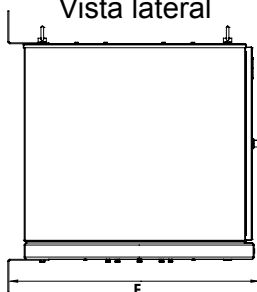
Vista frontal



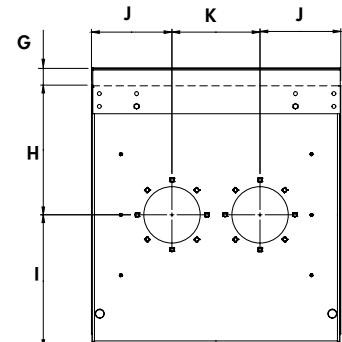
Vista superior



Vista lateral

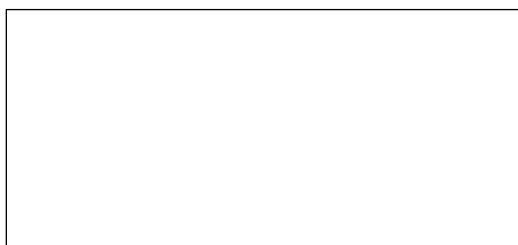


Bottom view



|   | mm  | inch     |
|---|-----|----------|
| A | 308 | 12 1/8   |
| B | 657 | 25 7/8   |
| D | 675 | 26 9/16  |
| E | 767 | 30 3/16  |
| F | 760 | 29 29/32 |
| G | 50  | 2        |
| H | 354 | 13 29/32 |
| I | 362 | 14 1/4   |
| J | 220 | 8 11/16  |
| K | 240 | 9 7/16   |
| L | 340 | 13 3/8   |
| M | 376 | 14 13/16 |

Representante de PlymoVent



**PLYMOVENT®**

PlymoVent AB  
Industrigatan 26, SE-212 14 Malmö, Suecia  
Tel:+46 40 30 31 30, Fax: +46 40 30 31 40  
www.plymovent.com info@plymovent.se