



## KUA IS THE #1 CHOICE OF OUR CUSTOMERS

### IDEAL FOR SMALL AND MEDIUM SIZED WORKPLACES

The Plymovent KUA-200 is a flexible extraction arm for fume, gases and oilmist contaminants. The flexible extraction arm is made of aluminum. This makes it a lighter choice than competitive steels based tube arms. The Plymovent KUA-200 extraction arm is not only lightweight but is also flexible and is designed for intuitive, user-friendly operation. And besides all these great benefits is the diameter of this arm 200 mm, which means an enormous airflow.

### USER AND MAINTENANCE FRIENDLY

The KUA extraction arm is made of aluminum which makes this arm extremely light to use. The grip on the hood makes moving of the arm very easy. The hood is 85° movable in four directions. The external middle hinge ensure accurate rotation and make manoeuvring of the arm a simple, one movement operation. You can position the arm exactly where you need it, when you need it! The frictions of the arm are on the outside, this result in a higher airflow and a maintenance friendly extraction arm.

The removable hood has a safety mesh to prevent for entering bigger parts. This safety mesh protects the extraction arm and the system behind the arm. The KUA-200 extraction arm is fitted standard with a sealed shut-off & control valve.

### DIFFERENT TYPES AND OPTIONS

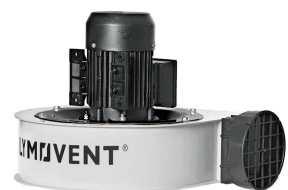
The KUA-200 extraction arm is deliverable in different types:

- Type H for hanging mounting to the wall or with a stanchion to the floor and ceiling (wall bracket incl.)
- Type S for standing mounting (future development)
- Type ATEX for use in explosive environments. Zone 22; marking EX II 3D (for hanging mounting only)

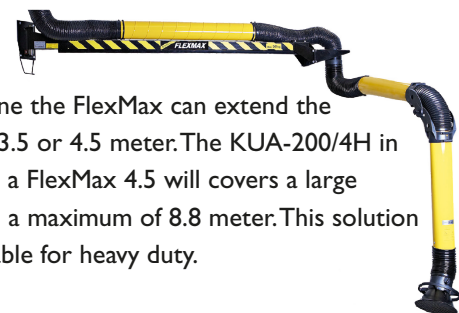
- The LL-5.5/24-200 is a manual switch on/off including a LED working light for mounting on the hood is available for the KUA-200.



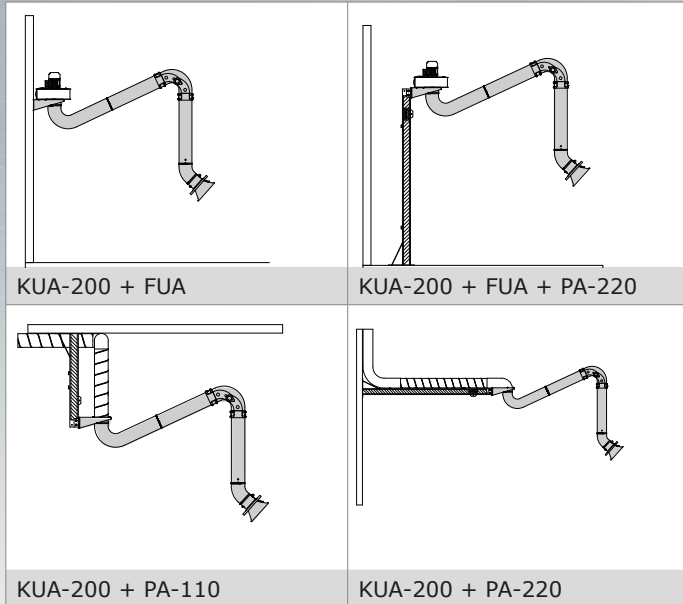
- To connect the KUA-200 extraction arm to a fan arm arm-fan adapter KUA-FUA is available for the FUA-1800/2100/3000.



- An extension crane the FlexMax can extend the reach by 1.5, 2.5, 3.5 or 4.5 meter. The KUA-200/4H in combination with a FlexMax 4.5 will covers a large welding area with a maximum of 8.8 meter. This solution is extremely suitable for heavy duty.



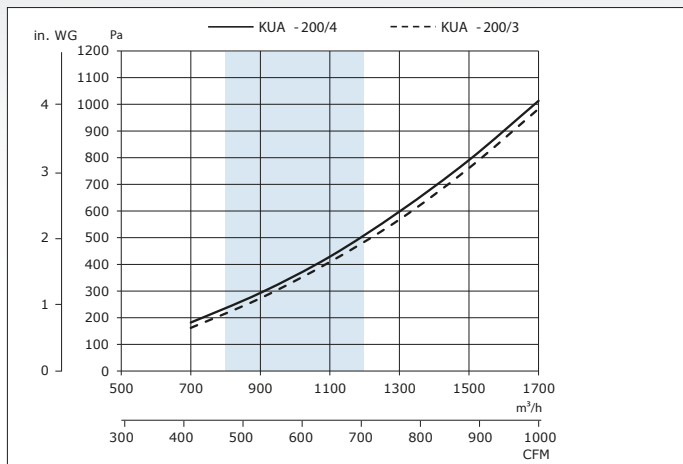
## MOUNTING POSSIBILITIES "H" TYPES



## FEATURES



## PRESSURE DROP



- ✓ Rigid industrial design, low operational costs and easy to maintain
- ✓ Light weight construction, easy to handle, high stability
- ✓ Smooth solid tubes, energy saving, low noise level and suitable for high airflow
- ✓ Wide range of option and accessories to optimize for specific need
- ✓ Is intended to be used for MIG-MAG/GMAW, TIG, FCAW and stick/MMAW welding

## TECHNICAL SPECIFICATIONS

	KUA-200/3H	KUA-200/4H	KUA-200/3H ATEX*	KUA-200/4H ATEX*
Length	3 m / 9.8 ft	4 m / 13.1 ft	3 m / 9.8 ft	4 m / 13.1 ft
Weight (net)	39 kg / 86 lbs	41 kg / 90 lbs	39 kg / 86 lbs	41 kg / 90 lbs
Diameter tubes	ø 200 mm / 7.9 in	ø 200 mm / 7.9 in	ø 200 mm / 7.9 in	ø 200 mm / 7.9 in
Combinations	<ul style="list-style-type: none"> <li>• FUA-1800</li> <li>• FUA-2100</li> <li>• FUA-3000</li> <li>• WallPro</li> </ul>	<ul style="list-style-type: none"> <li>• FUA-1800</li> <li>• FUA-2100</li> <li>• FUA-3000</li> <li>• WallPro</li> </ul>	<ul style="list-style-type: none"> <li>• FUA-1800</li> <li>• FUA-2100</li> <li>• FUA-3000</li> <li>• WallPro</li> </ul>	<ul style="list-style-type: none"> <li>• FUA-1800</li> <li>• FUA-2100</li> <li>• FUA-3000</li> <li>• WallPro</li> </ul>
Working Reach:	max. 3440 mm / 11.3 ft	max. 4130 mm / 13.5	max. 3440 mm / 11.3 ft	max. 4130 mm / 13.5 ft

\* Extraction arm in accordance with: ATEX directive 94/9/EC

**PLYMOVENT®**  
clean air at work

International Distributor Sales  
Plymovent Group BV  
P.O. Box 9350  
1800 GJ Alkmaar  
The Netherlands

T +31 (0)72 5640 604  
E export@plymovent.com

*Plymovent cares about the air you breathe. We offer products, systems and services which ensure clean air at work, anywhere in the world.*

*We respect the environment and we deliver high-quality products. Our expertise gained over many years and our genuine commitment to customer requirements enable us to provide precisely the solutions you need.*